

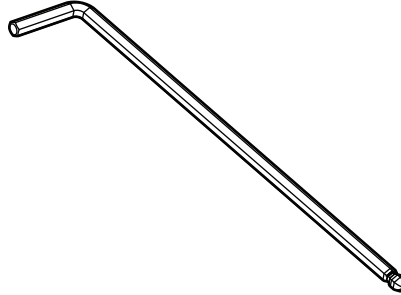
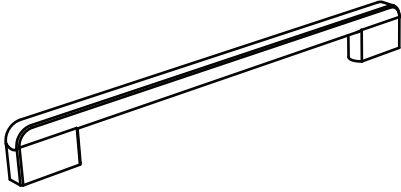
HANDLE INSTALLATION

WTB4604/ WTB5404/ WBE5304/ WBE4504
WRB5004/ WFB4204/WHE5204/ WHE5264

WARNING:

To protect your fridge door, it is **ESSENTIAL** to apply the protective film prior to the handle installation. Remove film once handle is installed.

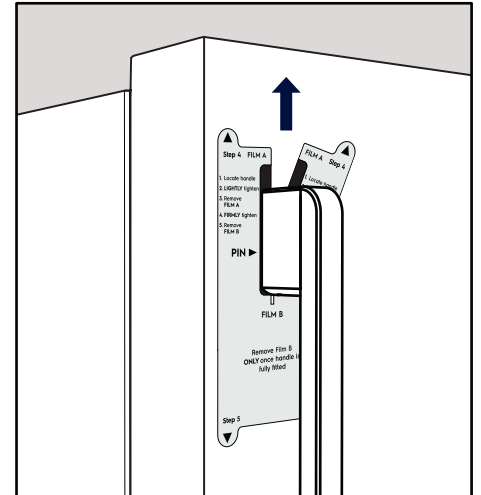
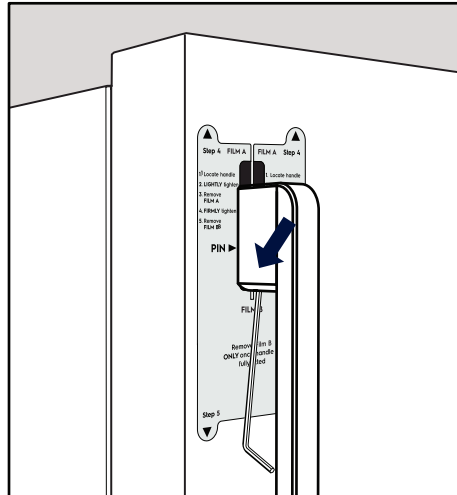
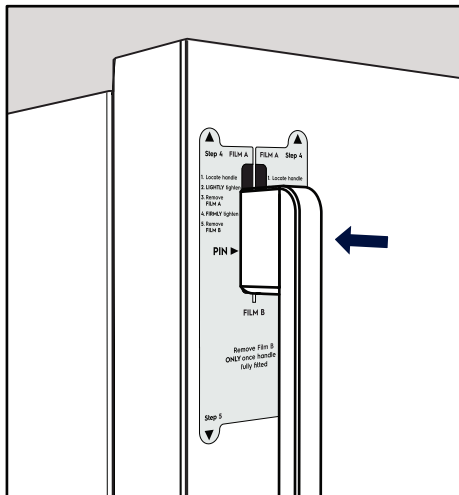
Handle Package Contents



1 FRIDGE HANDLES

Number of handles is dependent on your fridge model

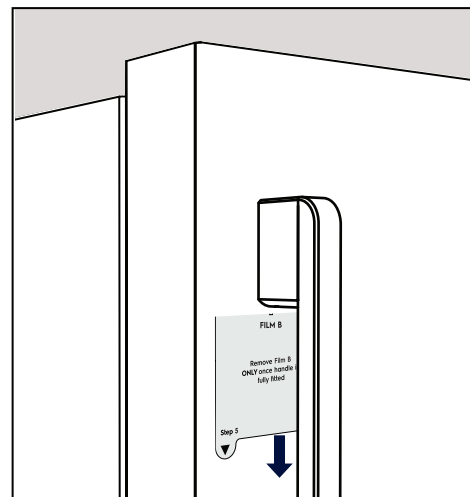
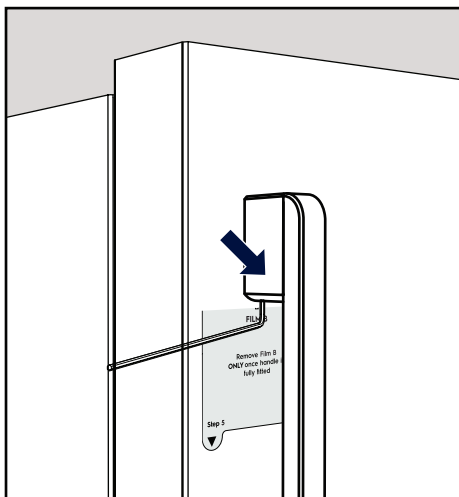
2 ALLEN KEY



1 Place and position handle on door.

2 Secure the handle in place, by **LIGHTLY** tightening the screw using the **LONG END** of the provided Allen Key. Please take care not to scratch the surface of the door with the end of the Allen key.

3 Gently remove upper protective Film A.



4 Lock the handle in place by **FIRMLY** tightening the screw using the **SHORT END** of the provided Allen Key.

5 Gently remove lower protective Film B. Repeat Step 1-5 for all remaining handles.