

# AEG

## THE KITCHEN COLLECTION

PRODUCT RANGE







## WELCOME TO AEG

Welcome to the AEG kitchen range.

Integrated into every appliance, you'll find intelligent technology and responsive design, guaranteeing you exceptional performance time after time. You'll discover that one touch redefines what's possible at home.

We innovate so that you can elevate what you do to new heights every day.

## CONTENTS

Mark Best, AEG Brand Ambassador	6
Cooking Demonstrations	7
Ovens	11
Cooktops	24
Rangehoods	40
Refrigeration	46
Cooking Accessories	50
Specifications	56
First Klasse Care	70
AEG Garantie	71

# MARK BEST AEG BRAND AMBASSADOR



Mark Best started by discovering the stoves accidentally and ended up becoming an unquestionable symbol of the new Australian Cuisine. His perseverance and his 'eternal dissatisfaction' (as he calls it himself) are the vitamins for his spectacular personal development.

"I live in a melting pot of new ideas and cultures," says Mark Best. "We do not have the shackles of culinary history; we are free to be inventive, spirited, adaptive and progressive."

"I aim to bring, the extraordinary produce of Australia, to a point of celebration and unnatural expression".

These words accurately describe Best's approach to cooking. Food, focussed on flavour, with technology an integral ingredient.

Best started his working life as an electrician in the gold mines of Western Australia before embarking on his culinary career at the age of 25. He commenced an apprenticeship at the Macleay Street Bistro, Potts Point, in 1990. This was the beginning of his passion for French food. It was the heyday of modern Australian cuisine – the fusion of European techniques

and ingredients with the flavours of the Asian region – and a flourishing time for Sydney's food scene. In 1995 Best won the annual award for Sydney's best young chef, The Josephine Pignolet Award.

In 1995, he opened his own restaurant, Peninsula Bistro, Balmain, which soon developed a strong local following and rave critical acclaim. During this time he decided to further his study of French Cuisine in France. In 1998 he worked at 'L'Arpège' in Paris, (under Pascal Barbot) Alain Passard's three Michelin Star Gastro Temple. He followed this with a stint at Raymond Blanc's, 'Le Manoir Aux Quatre Saisons' in Great Milton, UK.

Mark Best has won Chef of the Year in the annual Sydney Morning Herald Good Food Guide, Restaurant of the Year in Australian Gourmet Traveller, Sydney Morning Herald, Time Out magazine and in the Restaurant and Catering Association's Awards for Excellence, featured for three years running in the San Pellegrino & Restaurant Magazine's World's 50 Best commencing with the 2010 "Breakthrough Award".

Best has previously owned Marque, Pei Modern, Melbourne & Sydney, and recently opened 'Bistro' by Mark Best on the Genting Dream part of the expanding Dream Cruise lines.



# COOKING DEMONSTRATIONS

At AEG, we believe our products deliver intelligent technology and exceptional performance, helping you to take anything you do in the kitchen to the next level.

We want to equip you with the right tools to create exceptional taste experiences. Why not attend one of our introductory cooking demonstrations at one of our participating retailers to see for yourself.

Our demonstrations are designed to showcase some of the many features and benefits of our product range. You will receive great tips and tricks from our knowledgeable chefs who will demonstrate a variety of recipes and answer any questions you may have.

Our demonstration program runs throughout the year at a number of national retailers. Please visit our website and enter the Inspire with AEG area for full details.



# OVENS MASTER A NEW LEVEL OF FLAVOUR

Steam cooking uses the power of humidity to transfer heat more efficiently. Since water molecules conduct heat much faster than air, steam cooks your dish more quickly and thoroughly than convection.

By adding steam to traditional heat, our range of ovens ensures your dishes are cooked to your exact preference, delivering delicious flavour. The combination of heat and steam delivers crisp and golden on the outside and juicy and succulent on the inside – every single time. It's an uncomplicated and highly effective way of ensuring that everything you cook is packed with maximum flavour.

## STEAMPRO

### Your new standard for flavour

Advanced humidity sensors ensure you master taste, texture and colour.



## STEAMBOOST

### Turn flavour up to full

With the added benefit of steam, create succulent dishes by locking in natural moistures.



## STEAMCRISP

### Juicier flavours, crispier skins

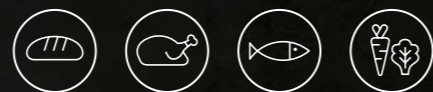
Add steam to traditional cooking to create crispy and golden results.



## STEAMBAKE

### Create a masterpiece

Add the perfect amount of steam to your baking for added caramelisation and extra thick crusts.



# SOUSVIDE IN JUST FOUR STEPS

Food cooked using the vacuum-sealed, lower temperature SousVide technique is tastier and healthier. You can cook with absolute purity, sealing in all the aromas, taste and nutrients within the vacuum, then applying gentle steam heat to cook delicious dishes.

## STEP 1

Clean, chop and season.



## STEP 3

Place in the oven and select the SousVide function.



## STEP 2

Seal all the flavours in the PrecisionVac SousVide vacuum sealer drawer.



## STEP 4

Plate and present.



# STEAMPRO. MASTER EVEN THE MOST COMPLEX FLAVOURS

Now you can be sure of exactly the right amount of steam to create delicious results every time – effortlessly. The SteamPro oven features our advanced humidity sensor to ensure the ideal taste, texture and colour when roasting meat, steaming vegetables, baking soufflés or making delicious SousVide dishes.



## STEAMPRO BSK892330M

**60cm SteamPro oven**  
with Command Wheel control

### KEY FEATURES

- 70L nett capacity, 77L gross
- 25 oven functions plus automatic assisted cooking
- SteamPro steam assisted cooking functions
- Command Wheel control with SousVide functions
- Humidity sensor
- Food Sensor
- Fully removable water drawer
- Steam cleaning functions
- SoftMotion door closing
- ThermiC<sup>air</sup> technology
- FloodLight illumination system
- IsoFront quadruple glazed door
- Anti-fingerprint stainless steel

### SPECIFICATIONS

**Product dimensions (HxWxD) in mm**  
594 x 594 x 567

**Flush fit cut-out dimensions (HxWxD) in mm**  
600 x 600 x 580

To view or download the installation guide for this product please [click here](#).

### Included accessories:

- 3 OptiFlex telescopic runner sets
- 2 stainless steel wire shelves
- Wire shelf trivet
- Roasting pan
- Cake tray
- Patissoire
- Steam set



### Humidity Sensor

The advanced humidity sensor ensures the precise amount of steam is used for every dish. It automatically adjusts temperature and moisture levels to match the type of food you're cooking for the very best taste and texture.



### SousVide Function

The SteamPro gives you the power of the SousVide technique that professional chefs swear by for the most tasty, tender and perfectly cooked food.



### Removable Water Drawer

You can easily remove the steam oven's water drawer with a simple movement, refill it at the tap, and perfectly slide it back into the sleek surface of the oven.



# STEAMBOOST. TURN FLAVOUR UP TO FULL

SteamBoost uses three different levels of steam. One for baking, one for roasting and crisping, and one that uses full steam. So you can create crusty bread, juicy roasts and succulent seafood dishes with ease. Cooking with steam means you can use lower temperatures, which maintains taste, texture and nutrients.



NEW

## STEAMBOOST BSK882320M

**60cm SteamBoost**  
oven with Command Wheel control

### KEY FEATURES

- 70L nett capacity, 77L gross
- 21 oven functions plus automatic assisted cooking
- SteamBoost steam assisted cooking functions
- Steam cleaning functions
- Food Sensor
- ThermiC°air technology
- SoftMotion door closing
- IsoFront quadruple glazed door
- Anti-fingerprint stainless steel
- Removable water drawer

### Included accessories:

- OptiFlex telescopic runner set
- 2 stainless steel wire shelves
- Dripping pan
- Wire shelf trivet
- Cake tray
- Steam set



### Food Sensor

The Food Sensor allows you to accurately control the cooking process, so every dish is finished just how you want it.



### Command Wheel

With the responsive Command Wheel and TFT display you have complete control over the cooking process, whether adjusting the time, temperature or function of your oven.



### Multi-level cooking

The additional heating ring in our oven ensures your dishes are evenly cooked – even when loaded with up to three trays – for corner deliciousness.

### SPECIFICATIONS

#### Product dimensions (HxWxD) in mm

594 x 595 x 567

#### Flush fit cut-out dimensions (HxWxD) in mm

600 x 600 x 580

To view or download the installation guide for this product please [click here](#).

# STEAMCRISP. YOUR NEW STANDARD FOR FLAVOUR

Take your dishes to the next level with the SteamCrisp function. How? Traditional oven heat is enhanced by the introduction of steam. So not only do you get crisp and golden the outside, but thanks to the gentle flavour preserving nature of steam, food is juicy, succulent and consistently tasty on the inside.



## STEAMCRISP PYROLUXE™ BSK774320M

**60cm SteamCrisp oven**  
with Touch on Glass controls

### KEY FEATURES

- 70L nett capacity, 77L gross
- 19 oven functions plus automatic assisted cooking
- SteamCrisp steam assisted cooking functions
- PyroLux™ self-cleaning function
- Food Sensor
- SoftMotion door closing
- ThermiC°air technology
- FloodLight illumination system
- IsoFront quadruple glazed door
- Anti-fingerprint stainless steel

### Included accessories:

- 3 OptiFlex telescopic runner sets
- 2 chrome wire shelves
- Dripping pan
- Wire shelf trivet
- Cake tray

### SPECIFICATIONS

#### Product dimensions (HxWxD) in mm

594 x 595 x 567

#### Flush fit cut-out dimensions (HxWxD) in mm

600 x 600 x 580

To view or download the installation guide for this product please [click here](#).



### Pyrolytic cleaning

With one touch, dirt, grease and food residue in the oven is converted into ash that you can easily wipe off with a damp cloth.



### Food Sensor

The Food Sensor allows you to accurately control the cooking process, so every dish is finished just how you want it.



### LCD Display

Featuring a large LCD Display, this intuitive oven automatically adjusting the temperature and time settings to a wide range of foods

# STEAMBAKE. ADD STEAM FOR CRISPIER BAKING

The SteamBake function adds steam at the beginning of the baking process, keeping the dough moist on the surface to create a golden colour and tasty crust, while the heart stays soft and tender.



## STEAMBAKE PYROLUXE™ BPK556320M

**60cm SteamBake PyroLuxe™**  
oven with Touch on Glass controls

### KEY FEATURES

- 71L nett capacity, 77L gross
- 10 oven functions
- SteamBake steam assisted baking function
- PyroLuxe™ self-cleaning function
- Food Sensor
- ThermiC°air technology
- SoftMotion door closing
- IsoFront quadruple glazed door
- Anti-fingerprint stainless steel

### Included accessories:

- 3 OptiFlex telescopic runner sets
- 2 chrome wire shelves
- Dripping pan
- Wire shelf trivet
- Cake tray

### SPECIFICATIONS

#### Product dimensions (HxWxD) in mm

594 x 594 x 567

#### Flush fit cut-out dimensions (HxWxD) in mm

600 x 600 x 580

To view or download the installation guide for this product please [click here](#).



### Soft closing door technology

Ensures that the door always shuts softly and silently, to deliver both the look and feel of premium performance.



### XL Baking Tray

Compared with standard trays, this XL Baking Tray is 20% bigger, making it possible for you to prepare even larger batches of delicious baked goods.



### Safe to touch plus

The outside of this oven door stays cool to the touch. It reaches a maximum of 30°C above standard room temperature, allowing for a safe interaction under all circumstances.



NEW

## STEAMBAKE PYROLUXE™ BPK552220M

**60cm SteamBake PyroLuxe™ oven**  
with Push Button control

### KEY FEATURES

- 71L nett capacity, 77L gross
- 10 oven functions
- SteamBake steam assisted baking function
- PyroLuxe™ self-cleaning function
- Food Sensor
- SoftMotion door closing
- ThermiC°air technology
- IsoFront quadruple glazed door
- Fully programmable timer
- Anti-fingerprint stainless steel

### Included accessories:

- 2 chrome wire shelves
- Dripping pan
- Wire shelf trivet

### SPECIFICATIONS

#### Product dimensions (HxWxD) in mm

594 x 595 x 567

#### Flush fit cut-out dimensions (HxWxD) in mm

600 x 600 x 580

To view or download the installation guide for this product please [click here](#).



## STEAMBAKE BEK455310M

**60cm SteamBake oven**  
with Touch on Glass control

### KEY FEATURES

- 71L nett capacity, 77L gross
- 9 oven functions
- SteamBake steam assisted baking function
- SoftMotion door closing
- ThermiC°air technology
- IsoFront quadruple glazed door
- Fully programmable timer
- Anti-fingerprint stainless steel

### Included accessories:

- 2 chrome wire shelves
- Dripping pan
- Wire shelf trivet
- Cake tray

### SPECIFICATIONS

#### Product dimensions (HxWxD) in mm

594 x 595 x 567

#### Flush fit cut-out dimensions (HxWxD) in mm

600 x 600 x 580

To view or download the installation guide for this product please [click here](#).



# SENSECOOK. COOK TO TASTE, EVERY TIME

By precisely measuring the core temperature of your food, the Food Sensor lets you know when your rare, medium or well done meat is ready. As well as cooking fish, casseroles and vegetables just the way you like them.



## SENSECOOK PYROLUXE™ BPK842320M

**60cm SenseCook PyroLux™ oven**  
with Command Wheel control

### KEY FEATURES

- 71L nett capacity, 77L gross
- 16 oven functions
- Automatic assisted cooking
- PyroLux™ easy cleaning
- Food Sensor
- ThermiC°air technology
- SoftMotion door closing
- FloodLight illumination system
- IsoFront quadruple glazed door
- Fully programmable timer
- Anti-fingerprint stainless steel

### Included accessories:

- 3 OptiFlex telescopic runner sets
- 2 chrome wire shelves
- Wire shelf trivet
- Dripping pan
- Cake tray



### Food Sensor

The Food Sensor allows you to accurately control the cooking process, so every dish is finished just how you want it.



### Pyrolytic cleaning

With one touch, dirt, grease and food residue in the oven is converted into ash that you can easily wipe off with a damp cloth.



### Command Wheel

With the responsive Command Wheel and TFT display you have complete control over the cooking process, whether adjusting the time, temperature or function of your oven.



## SENSECOOK PYROLUXE™ BPK742320M

**60cm SenseCook PyroLux™ oven**  
with Touch on Glass control

### KEY FEATURES

- 71L nett capacity, 77L gross
- 16 oven functions
- Automatic assisted cooking
- PyroLux™ easy cleaning
- Food Sensor
- ThermiC°air technology
- SoftMotion door closing
- FloodLight illumination system
- IsoFront triple glazed door
- Fully programmable timer
- Anti-fingerprint stainless steel

### Included accessories:

- 3 OptiFlex telescopic runner sets
- 2 chrome wire shelves
- Wire shelf trivet
- Dripping pan
- Cake tray

### SPECIFICATIONS

**Product dimensions (HxWxD) in mm**  
594 x 595 x 567

**Flush fit cut-out dimensions (HxWxD) in mm**  
600 x 600 x 580

To view or download the installation guide for this product please [click here](#).

### SPECIFICATIONS

**Product dimensions (HxWxD) in mm**  
594 x 595 x 567

**Flush fit cut-out dimensions (HxWxD) in mm**  
600 x 600 x 580

To view or download the installation guide for this product please [click here](#).



# HIGH PERFORMANCE COMPACT SIZE

Our compact range offers powerful performance in a small design. Simply select the combination of appliances to best suit your needs and space, from combination steam or multifunction ovens, to combination and grill microwaves.



## COMPACT STEAMPRO KSK792220M

**45cm SteamPro oven**  
with Touch on Glass control

### KEY FEATURES

- 43L nett capacity, 49L gross
- 25 oven functions plus Automatic assisted cooking
- SousVide functionality
- Humidity sensor
- Food Sensor
- Fully removable water drawer
- Steam cleaning function
- SoftMotion door closing
- ThermiC°air technology
- MaxiView expanded visibility
- FloodLight illumination system
- IsoFront quadruple glazed door
- Anti-fingerprint stainless steel

### Included accessories:

- Stainless steel wire shelf
- Roasting pan
- Cake tray
- Steam set



### Compact Ovens

Whether you want to roast, bake, grill, microwave or cook with steam – choose from our wide range of compact ovens to suit every preference.



### SousVide

The SousVide cooking system provides superior control of the cooking process, delivering optimal results with the combination of SteamPro oven technology and vacuum sealed food.

### SPECIFICATIONS

**Product dimensions (HxWxD) in mm**  
455 x 594 x 567

**Flush fit cut-out dimensions (HxWxD) in mm**  
460 x 600 x 570

To view or download the installation guide for this product please [click here](#).



NEW

## COMPACT STEAMBOOST KSK882220M

**45cm SteamBoost oven**  
with Command Wheel control

### KEY FEATURES

- 43L nett capacity, 49L gross
- 22 oven functions plus automatic programs
- Steam cleaning function
- Food Sensor
- SoftMotion door closing
- ThermiC°air technology
- IsoFront quadruple glazed door
- Anti-fingerprint stainless steel

### Included accessories

- Stainless steel wire shelf
- Cake tray
- Dripping pan
- Steam set

### SPECIFICATIONS

**Product dimensions (HxWxD) in mm**  
455 x 594 x 567

**Flush fit cut-out dimensions (HxWxD) in mm**  
460 x 600 x 570

To view or download the installation guide for this product please [click here](#).



NEW

## COMPACT STEAMBOOST KSK782220M

**45cm SteamBoost oven**  
with Touch on Glass control

### KEY FEATURES

- 43L nett capacity, 49L gross
- 22 oven functions plus automatic programs
- Steam cleaning function
- Food Sensor
- SoftMotion door closing
- ThermiC°air technology
- IsoFront quadruple glazed door
- Anti-fingerprint stainless steel

### Included accessories

- Stainless steel wire shelf
- Cake tray
- Dripping pan
- Steam set

### SPECIFICATIONS

**Product dimensions (HxWxD) in mm**  
455 x 595 x 567

**Flush fit cut-out dimensions (HxWxD) in mm**  
460 x 600 x 570

To view or download the installation guide for this product please [click here](#).



### COMPACT COMBIQUICK KMK761000M

**45cm CombiQuick Combi Microwave Oven**  
with Touch on Glass control

#### KEY FEATURES

- 7 oven functions, 8 special functions plus automatic assisted cooking
- 1000W microwave power
- Combination microwave and fan/grill cooking
- Quick start function
- 10 power levels
- Control lock
- IsoFront quadruple glazed door
- Anti-fingerprint stainless steel

#### Included accessories

- Chrome wire shelf
- Cake tray
- Side racks

#### SPECIFICATIONS

**Product dimensions (HxWxD) in mm**  
455 x 594 x 567

**Flush fit cut-out dimensions (HxWxD) in mm**  
460 x 600 x 570

To view or download the installation guide for this product please [click here](#).



### COMPACT MICROWAVE MBE2658D-M

**46cm Duo microwave**  
with grill and LCD display

#### KEY FEATURES

- 900W microwave power
- Combination microwave and grill cooking
- Suitable for undercounter installation
- Quick start function
- Automatic assisted cooking
- Autoweight cooking and defrosting programs
- Control lock
- Anti-fingerprint stainless steel

#### Included accessories

- Glass turntable
- Chrome wire shelf (high)
- Chrome wire shelf (low)

#### SPECIFICATIONS

**Product dimensions (HxWxD) in mm**  
459 x 596 x 404

**Flush fit cut-out dimensions (HxWxD) in mm**  
460 x 600 x 520

To view or download the installation guide for this product please [click here](#).



### PRECISIONVAC KDK911423M

**14cm Vacuum sealer drawer**

#### KEY FEATURES

- Vacuum chamber sealing system
- 5 functions; Marinating/infusing, Max vacuum, Med vacuum, Min vacuum, Seal only
- Adjustable sealing time (0-4 seconds)
- LED touch controls
- Pair with any SteamPro steam oven for SousVide cooking
- Preservation for extended food freshness
- Store and cook food in the supplied vacuum bags between 40°C and +100°C
- Black glass & anti-fingerprint stainless steel

#### Included accessories:

- Volume reducer
- 25 SousVide bags (20x30cm)
- 25 SousVide bags (20x35cm)
- Oil filter & cap

#### SPECIFICATIONS

**Product dimensions (HxWxD) in mm**  
140 x 595 x 510

**Flush fit cut-out dimensions (HxWxD) in mm**  
141 x 600 x 570

To view or download the installation guide for this product please [click here](#).



### WARMING DRAWER KDK911422M

**14cm Warming drawer**

#### KEY FEATURES

- Adjustable between 30°C & 80°C
- 6 place setting
- Ideal for dough proving at 40°C
- Warms cups and glasses at 40°C
- Plate warmer at 60°C
- Food warming at 60°C to 80°C
- SoftMotion™ drawer movement
- Black glass & anti-fingerprint stainless steel

#### SPECIFICATIONS

**Product dimensions (HxWxD) in mm**  
140 x 595 x 535

**Flush fit cut-out dimensions (HxWxD) in mm**  
141 x 600 x 570

To view or download the installation guide for this product please [click here](#).

# TOTAL KITCHEN FLEXIBILITY

Our AEG double oven offers an additional cooking compartment, giving you total flexibility in your kitchen. The oven can be installed in a column at eye-level for easy access. For even more flexibility you can combine our double oven in a column with our compact products.



## DOUBLE OVEN DCK731110M

**60cm SurroundCook Double Oven**  
with Touch on Glass control

### KEY FEATURES

- Top oven: 43L nett; bottom oven: 68L nett capacity
- 8 oven functions (top oven)
- 10 oven functions (bottom oven)
- MaxiView expanded visibility
- IsoFront triple glazed door
- CataLuxe cavity lining
- Removable easy clean racks
- Anti-fingerprint stainless steel

### Included accessories:

- 2 OptiFlex telescopic runner sets
- 2 chrome wire shelves
- Wire shelf trivet
- Cake tray
- Grill rack

### SPECIFICATIONS

#### Product dimensions (HxWxD) in mm

888 x 594 x 548

#### Flush fit cut-out dimensions (HxWxD) in mm

894 x 600 x 570

To view or download the installation guide for this product please [click here](#).



### SurroundCook

Unlike standard ovens, the SurroundCook oven's advanced fan technology ensures that every part of your dish is getting exactly the heat it needs. Evenly. Consistently. Wherever it's placed. Whether it's one dish or several. No more turning dishes halfway through cooking. Just the results that meet your expectations, every time.



### CataLuxe Cleaning

To help with oven cleaning, our double oven has the CataLuxe coating. The CataLuxe coating absorbs the grease during cooking and when the oven is heated to 220°C, the grease residue is oxidised leaving the surface clean.

# 90CM SENSECOOK PYROLYTIC OVEN

The perfect combination of cutting-edge design and precision, the AEG 90cm oven with PyroLuxe™ Self Cleaning will be the standout performer in your kitchen. With spacious 125L capacity, you'll be able to execute several superior dishes simultaneously. Incorporating the very best in fan technology, the SurroundCook PLUS will ensure the heat is distributed evenly to your dishes no matter where they are placed, meaning great tasting food exactly the way you want it.



### SPECIFICATIONS

#### Product dimensions (HxWxD) in mm

596 x 895 x 572

#### Flush fit cut-out dimensions (HxWxD) in mm

600 x 900 x 580

To view or download the installation guide for this product please [click here](#).

### SENSECOOK PYROLUXE™

BPK722910M

**90cm SenseCook PyroLuxe™ oven**  
with Touch on Glass control

### KEY FEATURES

- 116L nett capacity, 125L gross
- 19 oven functions
- PyroLuxe™ self-cleaning cycles
- SenseCook Food Sensor
- IsoFront quadruple glazed door
- SoftMotion door movement
- SurroundCook PLUS

### Included accessories:

- 2 OptiFlex telescopic runner sets
- 2 Chrome wire shelves
- 2 grill pans (half-width)
- 2 grill inserts (half-width)
- Grill pan support rack



### SenseCook

Use the Food Sensor to tell the oven how you want your dish cooked using just the words you would in a restaurant, rare, medium, or well done. Without even opening the oven door, everything from tender joints of meat to molten chocolate fondants are controlled and mastered.



### PyroLuxe™ Self Cleaning

The advanced self-cleaning function takes all the effort out of keeping your oven clean. By heating the oven to 500°C, all food residue is turned to ash, which can then be simply wiped out with a damp cloth.



### SurroundCook PLUS

The advanced twin fan technology ensures that every part of your dish is getting exactly the heat it needs. Evenly. Consistently. Wherever it's placed. The fans rotate in opposite directions, distributing heat evenly throughout the extra wide oven.

# COOKTOPS

## PRECISION AND CONTROL

At AEG we believe a cooktop should look as good as it performs, which is why our new induction range has been designed with not only the latest assisted cooking technology, but also sleek and sophisticated finishes. Intuitive, precise, yet flexible and chic. Discover a new world of endless possibilities.

### Master food. To the exact degree.

The wireless probe on the SensePro measures the core temperature of food for precise results. It works without batteries so there's no upkeep required.

### SENSEPRO – YOUR PERSONAL SOUS CHEF

The SensePro cooktop gets every dish right. The wireless food sensor measures the core temperature of food. Boil pasta, simmer sauce, pan-fry a steak – whether rare, medium or well-done. It's even possible to SousVide on the cooktop. It's the personal sous chef for restaurant-style results at home.

### One touchscreen. Intuitive communication.

The touchscreen display provides an intuitive assisted cooking experience.



## SENSEFRY. RESULTS – WITHOUT THE GUESSWORK

Use the intelligent touchscreen on the SenseFry induction cooktop to select the food and desired result. The technology maintains an event heat for the best frying results. No more guessing when the pan is at the right temperature. And no need to adjust the settings during cooking.



**Hob²Hood** regulates the fan while you concentrate on the key moments involved in getting your dish just right. It will automatically control your cooker hood and lights. But if you'd rather adjust the fan speed, there are manual controls on the cooktop too.



### OptiHeat control

By monitoring each heat zone as it cools, the OptiHeat control helps you make the most efficient use of residual heat. The OptiHeat control advises 3 levels of residual heat – whether the heat zone is still hot enough to cook with, hot enough to keep food warm, or simply hot to touch.

### Pause function

When ready to resume, touch the Pause button again and all the zones return to their previous settings.

### CountUp timer

Set a reminder with the minute minder, or at a glance with the CountUp timer, keeping you in control of your cooking.

### AutoMax

The AutoMax function, once selected, will bring the zone up to the highest power level then reduces to the pre-selected power level for the remainder of the cooking time.

### Öko timer

The Öko timer is an intelligent way for you to use resources more efficiently. When the time is pre-set on the cooktop, the Öko timer turns off the cooking zone and uses residual heat in the cookware to finish cooking the dish. The result? The same high quality food for lower energy bills.



**OptiZone** pure induction – your touch brings it to life. Imagine a glossy sheet of pure ebony glass. Add backlit touch controls and cooking zones, glowing red only when you turn them on. It's the ultimate induction cooktop for the modern kitchen. Now available with FlexiBridge technology.

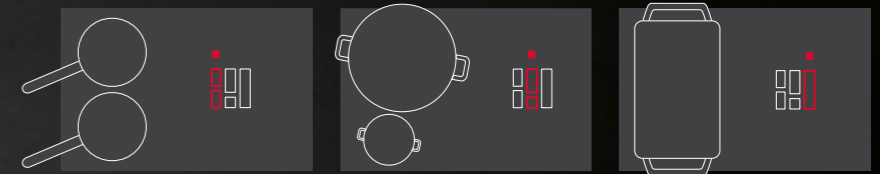
**FlexiBridge and ProCook.** Made for those occasions when you need more options with equally tasty results. The FlexiBridge feature means you can customise your own cooking area, combining up to 4 segments together with a consistent and even heat distribution ①.

At touch of a button, the FlexiBridge cooking zone featuring ProCook switches to three pre-set temperature levels: high, medium and low, so you can simply move the pan to seamlessly go from boil to simmer ②.

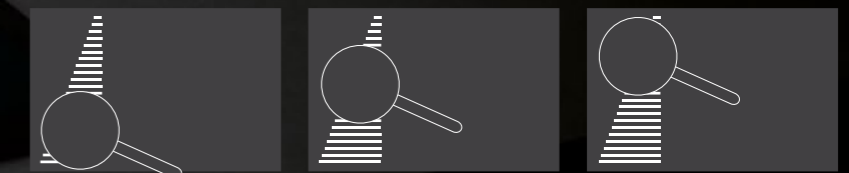


- ① FlexiBridge function
- ② ProCook function

① FlexiBridge



② ProCook



**High heat**  
when searing

**Medium heat**  
when low frying

**Low heat**  
when keeping warm

**DID YOU KNOW?**

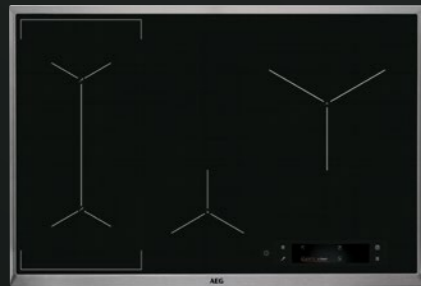
A steak is mostly cooked by the meat itself rather than the heat surrounding it. This is why flipping a steak every 15 seconds cooks a steak better than flipping every few minutes.

# SENSEPRO. PRECISION AT ITS CORE

King salmon. Duck breast. A smooth hollandaise. When there is the confidence to cook anything, there's no stopping culinary genius. The SensePro gets every dish right. The wireless probe measures the core temperature of food. It's even possible to SousVide on the cooktop. Precision and control deliver perfect taste.

NEW

## SENSEPRO INDUCTION IAE84881XB



**80cm SensePro induction cooktop**  
with 4 cooking zones and  
colour TFT touchscreen

### KEY FEATURES

- Wireless food sensor
- SousVide function
- Fry sensor auto controlled heat levels
- Hob<sup>2</sup>Hood function
- Bridging function
- Colour TFT touchscreen
- Melting function
- OptiHeat control
- Pause function
- Minute minder
- Öko timer function
- Control lock
- Stainless steel frame



### Wireless food sensor

The Food Sensor allows you to accurately control the cooking process, so every dish is finished just how you want it.



### SousVide

The SousVide cooking system provides superior control of the cooking process, delivering optimal results with the combination of induction technology and vacuum sealed food.



### Hob<sup>2</sup>Hood function

Leave Hob<sup>2</sup>Hood to regulate the fan while you concentrate on the key moments involved in getting your dish just right. It will automatically control your cooker hood and lights.

### SPECIFICATIONS

#### Product dimensions (WxD) in mm

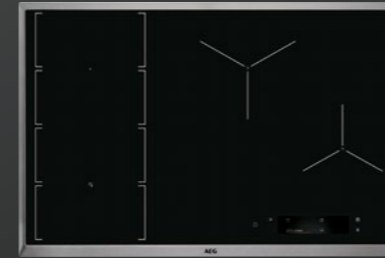
766 x 516

#### Cut-out dimensions (WxD) in mm

750 x 490

To view or download the installation guide for this product please [click here](#).

NEW



## SENSEFRY INDUCTION IAE84851XB

**80cm SenseFry induction cooktop**  
with 4 cooking zones and TFT touchscreen

### KEY FEATURES

- Fry Sensor auto controlled heat levels
- Hob<sup>2</sup>hood
- ProCook function
- FlexBridge 4 segment flexible cooking area
- TFT touchscreen
- Melting function
- OptiHeat control
- Pause function
- Minute minder
- Öko timer function
- Control lock
- Stainless steel frame

### SPECIFICATIONS

#### Product dimensions (WxD) in mm

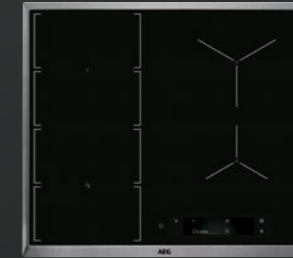
766 x 516

#### Cut-out dimensions (HxWxD) in mm

750 x 490

To view or download the installation guide for this product please [click here](#).

NEW



## SENSEFRY INDUCTION IAE64851XB

**60cm SenseFry induction cooktop**  
with 4 cooking zones and TFT touchscreen

### KEY FEATURES

- Fry Sensor auto controlled heat levels
- Hob<sup>2</sup>hood
- ProCook function
- FlexBridge 4 segment flexible cooking area
- TFT touchscreen
- Melting function
- OptiHeat control
- Pause function
- Minute minder
- Öko timer function
- Control lock
- Stainless steel frame

### SPECIFICATIONS

#### Product dimensions (WxD) in mm

576 x 516

#### Cut-out dimensions (HxWxD) in mm

560 x 490

To view or download the installation guide for this product please [click here](#).





NEW

### PURE FLEXIBRIDGE INDUCTION IPE84571FB

**80cm Pure FlexiBridge induction cooktop**  
with 4 cooking zones and touch controls

#### KEY FEATURES

- Pure black surface when off
- Hob<sup>2</sup>Hood function
- ProCook function
- FlexiBridge 4 segment flexible cooking area
- Touch slide controls
- OptiHeat control
- Pause function
- Minute minder
- Öko timer function
- Control lock

#### SPECIFICATIONS

##### Product dimensions (WxD) in mm

780 x 520

##### Cut-out dimensions (HxWxD) in mm

750 x 490

To view or download the installation guide  
for this product please [click here](#).



NEW

### PURE FLEXIBRIDGE INDUCTION IPE64571FB

**60cm Pure FlexiBridge induction cooktop**  
with 4 cooking zones and touch controls

#### KEY FEATURES

- Pure black surface when off
- Hob<sup>2</sup>Hood function
- ProCook function
- FlexiBridge 4 segment flexible cooking area
- Touch slide controls
- OptiHeat control
- Pause function
- Minute minder
- Öko timer function
- Control lock

#### SPECIFICATIONS

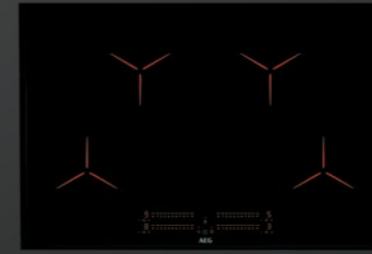
##### Product dimensions (WxD) in mm

650 x 520

##### Cut-out dimensions (HxWxD) in mm

590 x 490

To view or download the installation guide  
for this product please [click here](#).



NEW

### PURE OPTIZONE INDUCTION IPE84531FB

**80cm Pure OptiZone induction cooktop**  
with 4 cooking zones and touch controls

#### KEY FEATURES

- Pure black surface when off
- Hob<sup>2</sup>Hood function
- Touch slide controls
- OptiHeat control
- Pause function
- Minute minder
- Countdown timer
- Control lock

#### SPECIFICATIONS

##### Product dimensions (WxD) in mm

780 x 520

##### Cut-out dimensions (HxWxD) in mm

750 x 490

To view or download the installation guide  
for this product please [click here](#).



NEW

### PURE OPTIZONE INDUCTION IPE64551FB

**60cm Pure OptiZone induction cooktop**  
with 4 cooking zones and touch controls

#### KEY FEATURES

- Pure black surface when off
- Bridging function
- Hob<sup>2</sup>Hood function
- Touch slide controls
- OptiHeat control
- Pause function
- Minute minder
- Countdown timer
- Control lock

#### SPECIFICATIONS

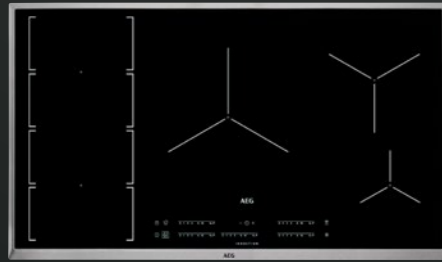
##### Product dimensions (WxD) in mm

590 x 520

##### Cut-out dimensions (HxWxD) in mm

560 x 490

To view or download the installation guide  
for this product please [click here](#).



NEW

### FLEXIBRIDGE INDUCTION IKE95471XB

**90cm FlexiBridge induction cooktop**  
with 5 cooking zones and touch controls

#### KEY FEATURES

- XL Zone
- Hob<sup>2</sup>Hood
- ProCook function
- FlexiBridge 4 segment flexible cooking area
- Touch slide controls
- OptiHeat control
- AutoMax function
- Pause function
- CountUp timer
- Öko timer function
- Control lock
- Stainless steel frame

#### SPECIFICATIONS

**Product dimensions (WxD) in mm**  
896 x 516

**Cut-out dimensions (HxWxD) in mm**  
880 x 490

To view or download the installation guide  
for this product please [click here](#).



NEW

### OPTIZONE INDUCTION IKE63441XB

**60cm 3 OptiZone induction cooktop**  
with bridging technology and touch controls

#### KEY FEATURES

- XL Zone
- Hob<sup>2</sup>Hood
- Bridging function
- Touch slide controls
- OptiHeat control
- AutoMax function
- Pause function
- CountUp timer
- Öko timer function
- Control lock
- Stainless steel frame

#### SPECIFICATIONS

**Product dimensions (WxD) in mm**  
590 x 520

**Cut-out dimensions (HxWxD) in mm**  
560 x 490

To view or download the installation guide  
for this product please [click here](#).

## SENSITIVE CONTROLS FOR PRECISION COOKING

Our ceramic cooktop provides a variety of different sized cooking zones as well as extended cooking zones that allow a cooking area to precisely suit your needs.



### CERAMIC HK654070XB

**60cm ceramic cooktop**  
with touch controls

#### KEY FEATURES

- 4 zones including 2 extended zones
- OptiHeat control
- Touch slide controls
- AutoMax function
- Stop + Go function
- CountUp timer
- Öko timer function
- Control lock

#### SPECIFICATIONS

**Product dimensions (WxD) in mm**  
576 x 516

**Cut-out dimensions (WxD) in mm**  
560 x 490

To view or download the installation guide  
for this product please [click here](#).



#### OptiHeat Control

By monitoring each heat zone as it cools, the OptiHeat control helps you make the most efficient use of residual heat. The OptiHeat control advises 3 levels of residual heat – whether the heat zone is still hot enough to cook with, hot enough to keep food warm, or simply hot to touch.



#### AutoMax

The AutoMax function, once selected, will bring the zone up to the highest power level then reduces to the pre-selected power level for the remainder of the cooking time.



#### Stop + Go

When ready to resume, touch the Pause button again and all the zones return to their previous settings.

# PERFECT IN STYLE AND PERFORMANCE

The gas on black ceramic cooktop offers maximum stability for when cooking gets fast and furious. The striking grid design of trivets also offer you perfection in style and performance.



**GAS ON CERAMIC GLASS**  
HG975550VB

## 90cm 5 burner ceramic

### KEY FEATURES

- 5 burners including wok burner
- 14.4MJ triple crown wok burner
- High quality vitreous ceramic glass
- Cast iron pan support
- Automatic integrated ignition
- Flame failure safety device
- Wok support trivet

### SPECIFICATIONS

**Product dimensions (WxD) in mm**  
880 x 510

**Cut-out dimensions (HxWxD) in mm**  
830 x 480

To view or download the installation guide for this product please [click here](#).



**GAS ON CERAMIC GLASS**  
HG674550VB

## 60cm 4 burner ceramic

### KEY FEATURES

- 4 burners including wok burner
- 13.7MJ triple crown wok burner
- High quality vitreous ceramic glass
- Cast iron pan support
- Automatic integrated ignition
- Flame failure safety device
- Wok support trivet

### SPECIFICATIONS

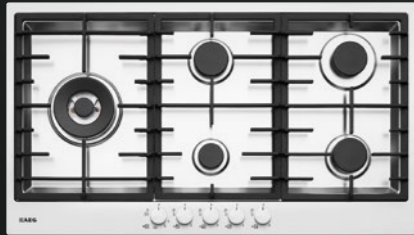
**Product dimensions (WxD) in mm**  
590 x 520

**Cut-out dimensions (HxWxD) in mm**  
560 x 480

To view or download the installation guide for this product please [click here](#).

# COMPLETE AND INSTANT CONTROL

Our gas cooktops are designed to be the focal point of your kitchen, providing instant and intense heat for precise control.



**GAS**  
HG90FXA

## 90cm stainless steel gas cooktop

### KEY FEATURES

- 5 burners including wok burner
- Powerful 18MJ dual valve wok burner
- High quality stainless steel
- Cast iron pan support
- Automatic integrated ignition
- Flame failure safety device
- Laser etched graphics

### Included accessories

- Wok support trivet
- Mini trivet



### 18MJ wok burner

Powerful dual valve wok burner, providing exceptional levels of control – from as low as 1MJ for simmering, or up to 18MJ of intense heat, perfect for searing, or stir fry cooking. (Selected models only)



### Flame failure safety device

If the flame of your gas burner is accidentally extinguished, the flame failure device will switch off the gas supply to ensure the utmost safety.

## SPECIFICATIONS

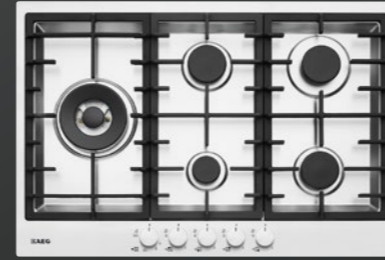
### Product dimensions (WxD) in mm

890 x 510

### Flush fit cut-out dimensions (HxWxD) in mm

860 x 480

To view or download the installation guide for this product please [click here](#).



**GAS**  
HG75FXA

## 75cm stainless steel gas cooktop

### KEY FEATURES

- 5 burners including wok burner
- Powerful 18MJ dual valve wok burner
- High quality stainless steel
- Cast iron pan support
- Automatic integrated ignition
- Flame failure safety device
- Laser etched graphics

### Included accessories

- Wok support trivet
- Mini trivet

## SPECIFICATIONS

### Product dimensions (WxD) in mm

750 x 510

### Cut-out dimensions (HxWxD) in mm

720 x 480

To view or download the installation guide for this product please [click here](#).



**GAS**  
HG60FXA

## 60cm stainless steel gas cooktop

### KEY FEATURES

- 4 burners including wok burner
- 10.3MJ wok burner
- High quality stainless steel
- Cast iron pan support
- Automatic integrated ignition
- Flame failure safety device
- Laser etched graphics

### Included accessories

- Wok support trivet
- Mini trivet

## SPECIFICATIONS

### Product dimensions (WxD) in mm

590 x 510

### Cut-out dimensions (HxWxD) in mm

560 x 480

To view or download the installation guide for this product please [click here](#).

# RANGEHOODS

## A FRESHER KITCHEN, SEAMLESSLY INTEGRATED



Our cooking environments need to be fresh, bright and peaceful, enriching the time that we spend there. We use advanced technology to ensure that the design and build of our rangehoods give you the optimum combination of high-end design and powerful functionality.

**Hob<sup>2</sup>Hood**  
AEG's intelligent Hob<sup>2</sup>Hood system ensures your hood works in harmony with your hob as soon as you turn your hob on. A wireless signal is sent to the hood, switching on the lights and providing optimal visibility.

**SilenceTech**  
Our more advanced hood technology reduces the noise level down to the lowest possible number of decibels so that you can cook powerfully and enjoy the experience without loud sounds from the appliance.

**LED indicators**  
Our new premium and modern user interface combines super responsive capacitive touch buttons along with back lit LED indicators. The LED turns red to show which feature is on or off.

**Dimmable LED**  
Provides the possibility to adjust the intensity of the light according to your needs, creating a nice ambient illumination in your kitchen.

**Seamless**  
Aligned across our range, your choice of hood will integrate seamlessly with any of our hob models. Our top line models feature our signature flow line for design harmony, together with a sophisticated white LED display on layered glass and metal.



**JET AIRCRAFT**  
140dB



**SIREN**  
120dB



**MOTORBIKE**  
90dB



**HAIRDRYER**  
80dB



**TALKING**  
60dB

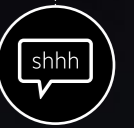


**54dB**  
SilenceTech Wall  
and vertical canopy  
rangehoods

**RAIN**  
50dB

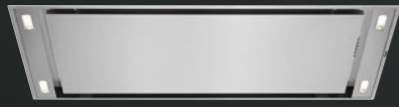


**WHISPER**  
30dB



**Run it for less energy**

Our hoods are highly efficient, using less energy than standard models. This is thanks to our brushless Inverter Technology. In fact, when you run the hood at its maximum speed, you'll use up to 40% less energy than standard models. And at the minimum setting, it needs less energy to run than a standard light bulb.



### CEILING HOOD

DCE5280HM

**120cm ceiling hood**  
with Hob<sup>2</sup>Hood control

#### KEY FEATURES

- High quality stainless steel
- Dimmable LED Lighting
- Hob<sup>2</sup>Hood control
- Remote control
- Dishwasher safe filters
- Indicator for cleaning filters
- Recirculating option
- 710 m<sup>3</sup>/hr extraction (intense)
- Remote control

### SPECIFICATIONS

**Product dimensions (HxWxD) in mm**  
1200 x 500 x 311

**Flush fit cut-out dimensions (HxWxD) in mm**  
1172 x 470

To view or download the installation guide for this product please [click here](#).

Recommended max installation heights from cooker is 1500mm



### INCLINED WALL CANOPY

DVK6980HB

**90cm inclined wall canopy rangehood**  
with Hob<sup>2</sup>Hood control

#### KEY FEATURES

- High quality stainless steel
- Dimmable LED lighting
- Hob<sup>2</sup>Hood control
- Indicator for cleaning filters
- Dishwasher safe filters
- Recirculating option
- 720 m<sup>3</sup>/hr extraction (intense)

### SPECIFICATIONS

**Product dimensions (HxWxD) in mm**  
1095-1445 x 898 x 396

To view or download the installation guide for this product please [click here](#).



### WALL CANOPY

DBE6980HM

**90cm wall canopy rangehood**  
with Hob<sup>2</sup>Hood control

#### KEY FEATURES

- High quality stainless steel
- Dimmable LED lighting
- Hob<sup>2</sup>Hood control
- Indicator for cleaning filters
- Dishwasher safe filters
- Recirculating option
- 710 m<sup>3</sup>/hr extraction (intense)

### SPECIFICATIONS

**Product dimensions (HxWxD) in mm**  
740-950 x 898 x 470

To view or download the installation guide for this product please [click here](#).



### INTEGRATED

DGE5160HM

**99cm integrated rangehood**  
with Hob<sup>2</sup>Hood control

#### KEY FEATURES

- Suitable for 80-90cm cooktops
- LED lighting
- Hob<sup>2</sup>Hood control
- Remote control
- Indicator for cleaning filters
- Dishwasher safe filters
- Recirculating option
- 660 m<sup>3</sup>/hr extraction (intensive)

### SPECIFICATIONS

**Product dimensions (HxWxD) in mm**  
330 x 990 x 300

**Flush fit cut-out dimensions (HxWxD) in mm**  
273 x 944

To view or download the installation guide for this product please [click here](#).



**INTEGRATED**  
DGE5860HM

**77cm integrated rangehood**  
with Hob<sup>2</sup>Hood control

KEY FEATURES

- Suitable for 70-80cm cooktops
- LED lighting
- Hob<sup>2</sup>Hood control
- Remote control
- Indicator for cleaning filters
- Dishwasher safe filters
- Recirculating option
- 660 m<sup>3</sup>/hr extraction (intensive)

**SPECIFICATIONS**

**Product dimensions (HxWxD) in mm**  
330 x 770 x 300

**Flush fit cut-out dimensions (HxWxD) in mm**  
273 x 723

To view or download the installation guide  
for this product please [click here](#).



**INTEGRATED**  
DGE5660HM

**54cm integrated rangehood**  
with Hob<sup>2</sup>Hood control

KEY FEATURES

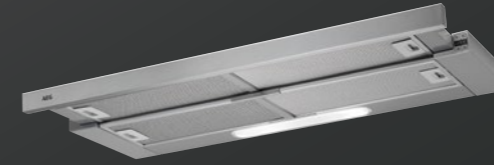
- Suitable for 60-70cm cooktops
- LED lighting
- Hob<sup>2</sup>Hood control
- Remote control
- Indicator for cleaning filters
- Dishwasher safe filters
- Recirculating option
- 660 m<sup>3</sup>/hr extraction (intensive)

**SPECIFICATIONS**

**Product dimensions (HxWxD) in mm**  
330 x 540 x 300

**Flush fit cut-out dimensions (HxWxD) in mm**  
273 x 493

To view or download the installation guide  
for this product please [click here](#).



**TELESCOPIC**  
DPB5950M/A

**90cm telescopic rangehood**  
with slide switch control

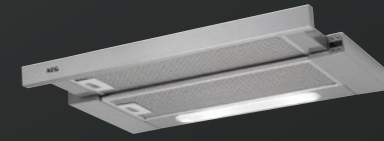
KEY FEATURES

- Suitable for 70-90cm cooktops
- LED lighting
- Dishwasher safe filters
- Recirculating option
- 605m<sup>3</sup>/hr extraction

**SPECIFICATIONS**

**Product dimensions (HxWxD) in mm**  
396 x 898 x 300

To view or download the installation guide  
for this product please [click here](#).



**TELESCOPIC**  
DPB5650M/A

**60cm telescopic rangehood**  
with slide and switch control

KEY FEATURES

- Suitable for 60-70cm cooktops
- LED lighting
- Dishwasher safe filters
- Recirculating option
- 605m<sup>3</sup>/hr extraction

**SPECIFICATIONS**

**Product dimensions (HxWxD) in mm**  
396 x 598 x 300

To view or download the installation guide  
for this product please [click here](#).

# REFRIGERATION

## PRECISION CHILLING FOR EXCEPTIONAL RESULTS

Carefully sourced ingredients need exact conditions to preserve their freshness. The right humidity, temperature and levels of light are critical, which is why we have developed the AEG refrigeration range with state-of-the-art features.



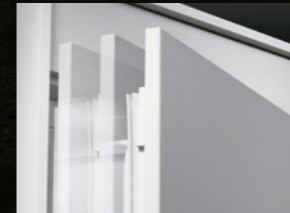
### AEG TwinTech technology

Unlike conventional fridge freezers that use cold, ultra-dry air from the freezer and recirculate it to cool the fridge, ProFresh Plus units have two separate cooling systems. This provides the ideal humidity in each compartment, preventing food from drying out in the fridge and delivering frost-free storage in the freezer.

### Nature's flavours in peak condition

When each ingredient and element of your cooking is carefully chosen, they need to remain at their best until you come to use them. With the TwinTech+ system, carefully selected temperature and humidity levels are maintained with minimal fluctuations.

So, your produce is not subjected to the variations that cause its quality to deteriorate. Your ingredients are chilled in peak conditions – fruits and vegetables stay crisp and bursting with flavour, meat and fish stay vibrant. From the moment you choose them to the moment they reach your plate.



### SoftClose hinges

The Hettich door hinges ensure a soft and precise door-closing performance.



### DynamicAir technology

Prevent warm zones by keeping the interior temperature totally even throughout the whole refrigerator on all levels.



### LCD touch controls

Take complete control of the storage conditions of your refrigerator at the touch of a finger.



### No frost technology

No need to defrost ever. The refrigerator fan creates a constant internal temperature, which results in automatic defrosting.

### STACKING FOR BEST RESULTS



**Top:**  
Ripe vegetables

**Bottom:**  
Fish and meat that require more humidity and lower temperature

**Door:**  
Glass jars, cans and drink

**Exceptions:**  
Potatoes and apples are best stored outside the fridge



# CHILL. CONTROLLED STORAGE CONDITIONS

The AEG built-in refrigeration range is designed to fit seamlessly into your kitchen whilst providing perfectly fresh food thanks to controlled storage conditions.



## FRIDGE / FREEZER SCE81826TC

### 265L integrated bottom mount refrigerator

with SoftClose doors, TwinTech cooling, DynamicAir technology and LCD touch controls.

#### KEY FEATURES

- TwinTech technology
- SoftClose hinges
- DynamicAir technology
- LCD touch controls
- No frost technology
- Coolmatic functions
- Frostmatic functions
- LED lighting
- Right and reversible hinges
- 4 fridge shelves including 1 flexi half-shelf



### TwinTech cooling system

The fridge and freezer compartments work independently to maintain the optimum temperature and humidity to keep foods fresh, or frozen.



### SoftClose hinges

The Hettich door hinges ensure a soft and precise door-closing performance.



### DynamicAir technology

Prevent warm zones by keeping the interior temperature totally even throughout the whole refrigerator on all levels.



### LCD touch controls

Take complete control of the storage conditions of your refrigerator at the touch of a finger.



### No frost technology

No need to defrost ever. The refrigerator is equipped with a fan that delivers constant temperature, resulting in automatic defrosting.



## FRIDGE SKE81821DC

### 314L integrated refrigerator

with SoftClose door, DynamicAir technology and LCD touch controls.

#### KEY FEATURES

- SoftClose hinges
- DynamicAir technology
- LCD touch controls
- No frost technology
- Coolmatic function
- Holiday mode
- LED lighting
- Bottle holder
- Right and reversible hinges
- 5 fridge shelves including 1 flexi half-shelf

#### SPECIFICATIONS\*

##### Product dimensions (HxWxD) in mm

1783 x 556 x 549

##### Flush fit cut-out dimensions (HxWxD) in mm

1771-1781 x 560-568 x 550(min)

To view or download the installation guide for this product please [click here](#).

\* These products require specialist installation. Please refer to the detailed installation instructions.



## FREEZER ABE81826NC

### 216L integrated freezer

with SoftClose door, Frostmatic technology and LCD touch controls.

#### KEY FEATURES

- SoftClose hinges
- LCD touch controls
- No frost technology
- Frostmatic function
- Temperature alarm
- Holiday mode
- LED lighting
- Right and reversible hinges
- 7 transparent freezer drawers

#### SPECIFICATIONS\*

##### Product dimensions (HxWxD) in mm

1783 x 556 x 549

##### Flush fit cut-out dimensions (HxWxD) in mm

1771-1781 x 560-568 x 550(min)

To view or download the installation guide for this product please [click here](#).

\* These products require specialist installation. Please refer to the detailed installation instructions.

# COOKING ACCESSORIES

Nothing should get in the way of achieving beautiful results. That's why at AEG we're dedicated to creating products that help you pursue your passion – your own personal definition of perfection. It's this thinking that lies at the heart of everything we do... it shapes our design and our advancements in technology.

For over a hundred years we have been using cutting edge designers to help create and develop our products, recognising that good design doesn't just make things easy on the eye, but easier for you to use.

Our cooking accessories are designed to complement your AEG kitchen appliances with the same level of precision you would expect from any other AEG products.



## Professional grade

The magnetic steel outer gives superior induction and is simple to clean. At the core is three layer aluminium – an excellent heat conductor. While the outside is crafted from hygienic, easy clean, corrosion-resistant 18/10 stainless steel.



## Reliable technology

The materials are all perfectly combined to ensure heat spreads evenly over the entire surface, including the sides, for uniform, controlled cooking. Even when heated quickly, no deflection or deformation will occur (long life quality).

# MASTERY COLLECTION

At AEG, we were the first to launch the induction cooking hob over 25 years ago.

Today, we bring you our high performance cookware range of premium pots and pans that is designed to harness the power and precision of induction technology to bring out the best in any ingredient.



## Designed to fit perfectly on AEG induction cooktops

The Mastery Collection's multi-layer construction is optimised for AEG induction cooktops and also fits all other cooktop surfaces. Fully flat bases optimise adherence to the cooktop surface and maximise heat transfer efficiency.



## Dishwasher and Oven Safe

The entire Mastery Collection is dishwasher safe. All Mastery Collection pots and pans are oven safe up to 250°C.



## COOKWARE A9KLLC0

### Roasting pot with lid

Use the Roasting pot to cook everything from casseroles to roast meats, vegetables and poultry. Sear and simmer on the cooktop, then finish off the dish in the oven in one convenient process. Keeping all the rich flavours inside the Roasting pot for a juicy tender result every time.

### SPECIFICATIONS

**Product dimensions (HxWxD) in mm**  
280 x 390 x 80



## COOKWARE A9KL1

### Teppanyaki grill plate

Create authentic Asian recipes with the Teppanyaki grill plate. Garlic chicken with sizzling vegetables, chilli and soy-glazed beef or king prawns. Balance textures and fine-tune tastes.

### SPECIFICATIONS

**Product dimensions (HxWxD) in mm**  
255 x 470 x 25



## COOKWARE A9HL33

### Plancha grill

Get perfect outdoor grill taste all year round with the Plancha grill. Steaks grilled to perfection, asparagus with the right crunch and seared scallops with the crispy crust and a tender inside.

### SPECIFICATIONS

**Product dimensions (HxWxD) in mm**  
220 x 432 x 18



## COOKWARE ACC132

### 9L stock pot

The 9 litre capacity stock pot suits large portions of meat, fish or pasta. (Designed for use with the pasta insert.)

### SPECIFICATIONS

**Diameter in mm**  
240



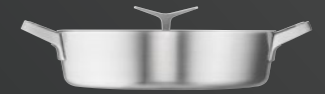
## COOKWARE ACC137

### Pasta insert

For cooking long, rigid pasta such as spaghetti, linguine and fettuccine; the pasta insert protects delicate pasta from tearing. (Designed for use with the 9L stock pot.)

### SPECIFICATIONS

**Diameter in mm**  
240



## COOKWARE ACC133

### 4.5L low casserole

The 4.5 litre low casserole is a multipurpose pan. Braise, poach and simmer to create flavourful and exciting dishes.

### SPECIFICATIONS

**Diameter in mm**  
300



## COOKWARE ACC134

### 3L saucepan

The 3 litre saucepan is the superior choice of pan for making sauces, poaching, boiling as well as deglazing, caramelising and stewing. (Designed for use with the chinois colander.)

### SPECIFICATIONS

**Diameter in mm**  
220



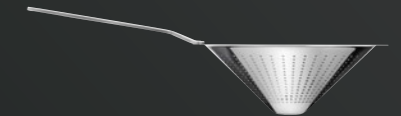
## COOKWARE ACC135

### 2L conical sauté

The 2 litre conical sauté is the optimal pan for sautéing and flash-frying small portions of meat and vegetables to achieve crisp yet moist results. (Designed for use with the chinois colander.)

### SPECIFICATIONS

**Diameter in mm**  
220



## COOKWARE ACC138

### Chinois colander

Use this premium quality colander to strain liquids for silky smooth results that taste exceptional. (Designed for use with the saucepan and conical sauté.)

### SPECIFICATIONS

**Diameter in mm**  
220



**COOKWARE**  
ACC136

**Frying pan**

This frying pan's short sides and base are designed to deliver rapid, uniform heating and gentle, consistent moisture reduction.

**SPECIFICATIONS**

**Diameter in mm**  
280



**OVEN ACCESSORIES**  
ACC098

**Steam set**

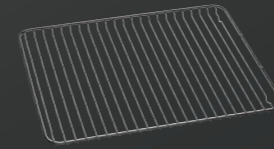
Ensures excess moisture is drawn away from your culinary creations whilst they are cooking in a steam environment.



**OVEN ACCESSORIES**  
ACC119

**Grill pan**

A custom enamelled grill pan helps to maintain the highest standards of cleanliness within your oven.



**OVEN ACCESSORIES**  
ACC111

**Grill pan insert non-stick**

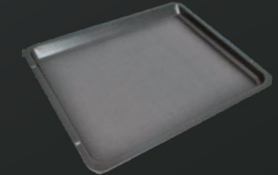
Designed to work with your grill pan and ACC119.



**OVEN ACCESSORIES**  
ACC113

**Drip pan non-stick**

Sits perfectly in your AEG oven to catch unwanted liquid from your food, keeping your oven clean and looking new.



**OVEN ACCESSORIES**  
ACC112

**Baking tray non-stick**

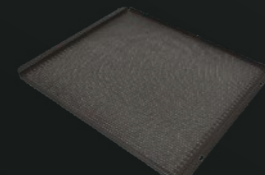
Designed exclusively for your oven.



**OVEN ACCESSORIES**  
ACC118

**Baking tray**

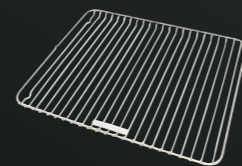
Designed to maximise your AEG oven to ensure an even bake.



**OVEN ACCESSORIES**  
ACC117

**Tray patisserie**

The perforated tray ensures a smooth and constant heat penetrates the base of pastry and dough creating a satisfying and noteworthy crust.



**OVEN ACCESSORIES**  
ACC116

**Grill grid**

Maximise your oven with additional oven grill shelves.



**OVEN ACCESSORIES**  
ACC125

**SousVide vacuum sealer bags (50)**

The professional grade AEG SousVide bags have been specially designed to withstand the temperatures associated with SousVide cooking. Bags can withstand up to 120°C for 30 minutes whilst cooking.

## BUILT-IN OVEN SPECIFICATIONS

PRODUCT CODE	BPK722910M	BSK892330M	BSK882320M
<b>Product name</b>	90cm SenseCook PyroLuxe™ oven	60cm SteamPro oven	60cm SteamBoost oven
<b>Features</b>			
Control type	Touch on glass	Command wheel	Command wheel
Oven capacity (gross)	125	77	77
Oven capacity (usable)	116	70	70
Number of functions	19	25	21
Recipe programmes	Yes	Yes	Yes
Fully programmable timer	Yes	Yes	Yes
Food sensor	Yes	Yes	Yes
SoftMotion door closing	Yes	Yes	Yes
ThermiC®air		Yes	Yes
SurroundCook	Yes		
FloodLight system		Yes	Yes
Cleaning	Yes, Pyrolytic	Yes, Steam	Yes, Steam
Humidity sensor		Yes	
SousVide functions		Yes	
Steam function		Yes, SteamPro	Yes, SteamBoost
Removable water drawer		Yes	Yes
Layers of glass in oven door	4	4	4
<b>Top oven (for DCK731110M only)</b>			
Oven capacity (nett)			43
Number of functions			8
<b>Bottom oven (for DCK731110M only)</b>			
Oven capacity (nett)			68
Number of functions			10
<b>Product dimensions</b>			
Height (mm)	596	594	594
Width (mm)	895	595	595
Depth (mm)	572	567	567
<b>Flush fit cut-out dimensions</b>			
Height (mm)	600	600	600
Width (mm)	900	600	600
Depth (mm)	580	580	580
<b>Performance</b>			
Connected load (kW)	5.5	3.2	3.5
Minimum fuse rating (A)	24	16	16
Type of connection	Hardwired	Hardwired	Hardwired
Energy efficiency class	B	A+	A+
Lights (W)	50	65	65
<b>Included accessories</b>			
OptiFlex telescopic runner sets	2	3	1
Dripping/grill pan	2 x 1/2 width	1	1
Wire shelf trivet/insert	2 x 1/2 width	1	1
Cake tray		1	1
Patissoire		1	
Steam set		1	1
Chrome wire shelves	2		
Stainless wire shelves		2	2

BPK842320M	BSK774320M	BPK742320M	DCK731110M
60cm SenseCook PyroLuxe™ oven	60cm SteamCrisp PyroLuxe™ oven	60cm SenseCook PyroLuxe™ oven	60cm SurroundCook double oven
Command wheel	Touch on glass	Touch on glass	Touch on glass
77	77	77	
71	71	71	43 top / 68 bottom
16	19	16	8 top / 10 bottom
Yes	Yes	Yes	
Yes	Yes	Yes	Yes
Yes	Yes	Yes	
Yes	Yes	Yes	
Yes	Yes	Yes	
			Yes
Yes	Yes	Yes	
Yes, Pyrolytic	Yes, Pyrolytic	Yes, Pyrolytic	Yes, Catalytic
	Yes, SteamCrisp		
4	4	4	3
			43
			8
			68
			10
594	594	594	888
595	595	595	594
567	567	567	548
600	600	600	894
600	600	600	600
580	580	580	570
3.5	3.5	3.5	5.8
16	16	16	25
Hardwired	Hardwired	Hardwired	Hardwired
A+	A+	A+	A
65	65	65	25 + 40
3	3	3	2
1	1	1	1
1	1	1	1
1	1	1	
2	2	2	2

## BUILT-IN OVEN SPECIFICATIONS

PRODUCT CODE	BPK556320M	BPK552220M	BEK455310M
<b>Product name</b>	60cm SteamBake PyroLuxe™ oven	60cm SteamBake PyroLuxe™ oven	60cm SteamBake oven
<b>Features</b>			
Control type	Knob + Touch on glass	Knob + Push button	Knob + Touch on glass
Oven capacity (gross)	77	77	77
Oven capacity (usable)	71	71	71
Number of functions	10	10	9
Recipe programmes			
Fully programmable timer	Yes	Yes	Yes
Food sensor	Yes	Yes	
SoftMotion soft close door	Yes	Yes	Yes
ThermiC®air	Yes	Yes	Yes
FloodLight system			
Cleaning	Pyrolytic	Pyrolytic	
Humidity sensor			
SousVide functions			
Steam function	Baking only	Baking only	Baking only
Removable water drawer			
Layers of glass in oven door	4	4	3
<b>Product dimensions</b>			
Height (mm)	594	594	594
Width (mm)	595	595	595
Depth (mm)	567	567	567
<b>Flush fit cut-out dimensions</b>			
Height (mm)	600	600	600
Width (mm)	600	600	600
Depth (mm)	580	580	580
<b>Performance</b>			
Connected load (kW)	3.2	3.2	3.2
Minimum fuse rating (A)	16	16	16
Type of connection	Hardwired	Hardwired	Hardwired
Energy efficiency class	A+	A+	A
Lights (W)	40	40	40
<b>Included accessories</b>			
OptiFlex telescopic runner sets	3		
Dripping pan	1	1	1
Wire shelf trivet	1	1	1
Cake tray	1		1
Steam set			
Chrome wire shelves	2	2	2
Stainless wire shelves			

## COMPACT OVEN SPECIFICATIONS

PRODUCT CODE	KSK792220M	KSK882220M	KSK782220M
<b>Product name</b>	45cm SteamPro oven	45cm SteamBoost oven	45cm SteamBoost oven
<b>Features</b>			
Control type	Touch on glass	Command Wheel	Touch on glass
Oven capacity (gross)	49	49	49
Oven capacity (usable)	43	43	43
Number of functions	25	22	22
Recipe programmes	Yes	Yes	Yes
Fully programmable timer	Yes	Yes	Yes
Food sensor	Yes	Yes	Yes
SoftMotion soft close door	Yes	Yes	Yes
ThermiC®air	Yes	Yes	Yes
FloodLight system	Yes	Yes	Yes
Cleaning	Yes, ProSteam	Yes, Steam	Yes, Steam
Humidity sensor	Yes		
SousVide functions	Yes		
Steam function	Yes, SteamPro	Yes, SteamBoost	Yes, SteamBoost
Removable water drawer	Yes	Yes	Yes
Layers of glass in oven door	4	4	4
<b>Product dimensions</b>			
Height (mm)	455	455	455
Width (mm)	594	594	595
Depth (mm)	567	567	567
<b>Flush fit cut-out dimensions</b>			
Height (mm)	460	460	460
Width (mm)	600	600	600
Depth (mm)	570	570	570
<b>Performance</b>			
Connected load (kW)	3	3	3
Minimum fuse rating (A)	16	16	16
Type of connection	Hardwired	Hardwired	Hardwired
Energy efficiency class	A+	A+	A+
Lights (W)	40	40	40
<b>Included accessories</b>			
OptiFlex telescopic runner sets			
Dripping pan	1	1	1
Wire shelf trivet	1	1	1
Cake tray	1	1	1
Steam set	1	1	1
Chrome wire shelves			
Stainless wire shelves	1	1	1

## MICROWAVE OVEN SPECIFICATIONS

PRODUCT CODE	KMK761000M	MBE2658D-M
<b>Product name</b>	45cm CombiQuick Combi microwave	46cm Built in microwave with grill
<b>Features</b>		
Microwave oven and grill		Yes
Microwave oven with convection and grill	Yes	
Number of microwave functions	8	5
Number of programmed functions	19	5
Automatic weight defrost program	Yes	Yes
Automatic weight cook program	Yes	Yes
Quick start function	Yes	Yes
Function control lock	Yes	Yes
Active display control	Yes	
One touch cook program	Yes	Yes
Touch controls	Yes	Yes
Electronic rotary controls		Yes
Timer	Programmable	90 minute
Isofront quadruple glaze door	Yes	
<b>Product dimensions</b>		
Height (mm)	455	459
Width (mm)	594	596
Depth (mm)	567	404
<b>Flush fit cut-out dimensions</b>		
Height (mm)	460	460
Width (mm)	600	600
Depth (mm)	570	520
Turntable diameter (mm)	325	325
<b>Performance</b>		
Connection load (kW)	3	1.4
Type of connection	Supply cord	15 amp plug
Microwave power (W)	1000	900
Grill power (W)	1900	800
Lights	1	1

## VACUUM SEALER DRAWER SPECIFICATIONS

PRODUCT CODE	KDK911423M
<b>Product name</b>	PrecisionVac vacuum sealer drawer
<b>Features</b>	
Controls	LED touch controls
Handle	None. Push - Pull
Number of functions	5
Functions	Marinating/infusing, Max vacuum, Med vacuum, Min vacuum, Seal only
<b>Product dimensions</b>	
Height (mm)	140
Width (mm)	540 (drawer front 595mm wide)
Depth (mm)	510
<b>Flush fit cut-out dimensions</b>	
Height (mm)	295
Width (mm)	600
Depth (mm)	570
<b>Performance</b>	
Connected load (kW)	1.1
Maximum current rating (A)	10
Type of connection	Cord only (no plug)
<b>Included accessories</b>	
20 x 30 cm bags (pack of 25)	Yes
20 x 35 cm bags (pack of 25)	Yes
Volume reducer	Yes

## WARMING DRAWER SPECIFICATIONS

PRODUCT CODE	KDK911422M
<b>Product name</b>	14cm Warming drawer
<b>Features</b>	
Handle	None. Push-Pull
Place settings	6
Defrosting (30°C Max)	Yes
Cups & glass warming (40°C)	Yes
Dough proving (40°C)	Yes
Plate warming (60°C)	Yes
Food warming (60-80°C)	Yes
Heating element	Yes
Fan air circulation	Yes
Rotary knob control	Yes
Variable temperature control (30°C to 80°C)	Yes
On/Off LED	Yes
Anti-slip mat	Yes
SoftMotion drawer movement	Yes
<b>Product dimensions</b>	
Height (mm)	140
Width (mm)	595
Depth (mm)	535
<b>Flush fit cut-out dimensions</b>	
Height (mm)	141
Width (mm)	600
Depth (mm)	570
<b>Performance</b>	
Connection load (W)	430
Power connection	Cord
Compatibility	
Suitable to complement any 45cm compact oven or 60cm oven listed in this brochure	Yes

### REQUIREMENTS

#### Before first use

Ensure product is oiled using supplied oil kit and conditioning program is performed.

#### Temperature of food:

Ensure liquids are cold before sealing in the vacuum pouch as hot liquids may boil over in the chamber at low pressure.

## INDUCTION COOKTOP SPECIFICATIONS

PRODUCT CODE	IAE84881XB	IAE84851XB	IAE64851XB	IPE84571FB
<b>Product name</b>	80cm SensePro	80cm SenseFry	60cm SenseFry	80cm Pure FlexiBridge
<b>Features</b>				
Number of cooking zones	4	4	4	4
Control type	Colour TFT Touchscreen	TFT Touchscreen	TFT Touchscreen	Touch control
Position of controls	Front right	Front right	Front right	Front right
Pure black surface				Yes
Stainless steel trim	Yes	Yes	Yes	
Grey glass surface	Yes	Yes	Yes	
Hob <sup>2</sup> Hood capable	Yes	Yes	Yes	Yes
Food sensor (Wireless)	Yes			
SousVide function	Yes			
Fry sensor (auto control heat)	Yes	Yes	Yes	
Bridging function	Yes	Yes, FlexiBridge	Yes, FlexiBridge	Yes, FlexiBridge
ProCook function		Yes	Yes	Yes
Melting (low even temp)	Yes	Yes	Yes	
XL Zone				
AutoMax automatic heat up				
OptiHeat Control	Yes	Yes	Yes	Yes
Pause function	Yes	Yes	Yes	Yes
Öko timer	Yes	Yes	Yes	Yes
CountUp timer				
Minute minder	Yes	Yes	Yes	Yes
Function control lock	Yes	Yes	Yes	Yes
<b>Product dimensions</b>				
Width (mm)	766	766	576	780
Depth (mm)	516	516	516	520
<b>Cut-out dimensions</b>				
Width (mm)	750	750	560	750
Depth (mm)	490	490	490	490
<b>Performance</b>				
Connection load (kW)	7.4	7.4	7.4	7.4
Type of connection	Hardwired	Hardwired	Hardwired	Hardwired
Left front zone	Bridge	FlexiBridge	FlexiBridge	FlexiBridge
Left front (W)	2300	2300	2300	2300
Left front boost (W)	3200	3200	3200	3200
Left rear zone	Bridge	FlexiBridge	FlexiBridge	FlexiBridge
Left rear (W)	2300	2300	2300	2300
Left rear boost (W)	3200	3200	3200	3200
Centre front zone	Single			
Centre front (W)	1400			
Centre front boost (W)	2500			
Centre rear zone		Single		Single
Centre rear (W)		2300		2300
Centre rear boost (W)		3200		3200
Right front zone		Single	Single	Single
Right front (W)		1800	1400	1800
Right front boost (W)		2800	2500	2800
Right rear zone	Single		Single	
Right rear (W)	2300		1800	
Right rear boost (W)	3600		2800	

IPE64571FB	IPE84531FB	IPE64551FB	IKE95471XB	IKE63441XB
60cm Pure FlexiBridge	80cm Pure 4 zone	60cm Pure 4 zone	90cm FlexiBridge 5 zone	60cm 3 zone
4	4	4	5	3
Touch control	Touch control	Touch control	Touch control	Touch control
Front right	Front centre	Front centre	Front right	Front right
Yes	Yes	Yes		
			Yes	Yes
Yes	Yes	Yes	Yes	Yes
Yes, FlexiBridge		Yes	Yes, FlexiBridge	Yes
Yes			Yes	
			Yes	Yes
Yes	Yes	Yes	Yes	Yes
Yes	Yes	Yes	Yes	Yes
Yes	Yes	Yes	Yes	Yes
Yes	Yes	Yes	Yes	Yes
650	780	590	896	590
520	520	520	516	520
590	750	560	880	560
490	490	490	490	490
7.4	7.4	7.4	7.4	7.4
Hardwired	Hardwired	Hardwired	Hardwired	Hardwired
FlexiBridge	Single	Bridge	FlexiBridge	Bridge
2300	2300	2300	2300	2300
3200	3200	3200	3200	3200
FlexiBridge	Single	Bridge	FlexiBridge	Bridge
2300	2300	2300	2300	2300
3200	3200	3200	3200	3200
			XL Zone	
			1800	
			3700	
Single	Single	Single	Single	XL Zone
1400	2300	2300	1400	1800
2500	3200	3200	2500	3700
Single	Single	Single	Single	
1800	2300	2300	2300	
2800	3200	3200	3200	



## CERAMIC COOKTOP SPECIFICATIONS

<b>PRODUCT CODE</b>	<b>HK654070XB</b>
<b>Product name</b>	60cm Ceramic
<b>Features</b>	
Number of cooking zones	4
Position of controls	Front
Control type	Touch control
AutoMax automatic heat up	Yes
3 level residual heat indication	Yes
Stop + Go	Yes
Öko timer	Yes
CountUp timer	Yes
Minute minder	Yes
Function safety lock	Yes
<b>Product dimensions</b>	
Width (mm)	576
Depth (mm)	516
<b>Cut-out dimensions</b>	
Width (mm)	560
Depth (mm)	490
<b>Performance</b>	
Connection load (kW)	7.1
Type of connection	Hardwired
<b>Zone Specification</b>	
Left front zone	Triple
Left front (W)	2300
Left front boost (W)	
Left rear zone	Single
Left rear (W)	1200
Left rear boost (W)	
Right front zone	Single
Right front (W)	1200
Right front boost (W)	
Right rear zone	Dual
Right rear (W)	2400
Right rear boost (W)	

## GAS ON GLASS SPECIFICATIONS

<b>PRODUCT CODE</b>	<b>HG975550VB</b>	<b>HG674550VB</b>
<b>Product name</b>	90cm Gas on ceramic glass	60cm Gas on ceramic glass
<b>Features</b>		
Number of cooking zones	5	4
Knob ignition	Yes	Yes
Rotary controls	Yes	Yes
Electronic touch slide controls		
Position of controls	Front left	Front right
Flame failure safety device	Yes	Yes
Cast iron pan supports	Yes	Yes
Hob <sup>2</sup> Hood Capable		
Flame light indicator		
Pause function		
Timer		
Child lock		
Auto shut off		
Residual heat indicators		
<b>Product dimensions (mm)</b>		
Width	880	590
Depth	510	520
<b>Cut-out dimensions</b>		
Width	830	560
Depth	480	480
<b>Performance</b>		
Maximum current rating (A)	10	10
Type of connection	Plug and lead	Plug and lead
Maximum gas rating (NG)	37.8	31.0
<b>Zone specification</b>		
Left front zone	Triple crown wok	Triple crown wok
Left front MJ/h	14.4	13.7
Left rear zone		Semi-rapid
Left rear MJ/h		6.8
Centre front zone	Simmer	
Centre front MJ/h	3.6	
Centre rear zone	Semi-rapid	
Centre rear MJ/h	6.8	
Right front zone	Semi-rapid	Simmer
Right front MJ/h	6.8	3.6
Right rear zone	Semi-rapid	Semi-rapid
Right rear MJ/h	6.8	6.8
<b>Included accessories</b>		
Wok support trivet	Yes	Yes

## GAS COOKTOP SPECIFICATIONS

PRODUCT CODE	HG90FXA	HG75FXA	HG60FXA
<b>Product name</b>	90cm Gas	75cm Gas	60cm Gas
<b>Features</b>			
Number of cooking zones	5	5	4
Knob ignition	Yes	Yes	Yes
Rotary controls	Yes	Yes	Yes
Position of controls	Front	Front	Front
Flame failure safety device	Yes	Yes	Yes
Cast iron pan supports	Yes	Yes	Yes
<b>Product dimensions</b>			
Width (mm)	890	750	590
Depth (mm)	510	510	510
<b>Cut-out dimensions</b>			
Width (mm)	860	720	560
Depth (mm)	480	480	480
<b>Performance</b>			
Maximum current rating (A)	10	10	10
Type of connection	Plug and lead	Plug and lead	Plug and lead
Maximum gas rating (MJ/HR NG)	40.5	40.5	26.3
Maximum power rating (kW)	11.2	11.2	7.3
<b>Zone specification</b>			
Left front zone	Dual valve wok	Dual valve wok	Double ring wok
Left front MJ/h	18	18	10.3
Left rear zone			Semi-rapid
Left rear MJ/h			6.3
Centre front zone	Simmer	Simmer	
Centre front MJ/h	3.4	3.4	
Centre rear zone	Semi-rapid	Semi-rapid	
Centre rear MJ/h	6.3	6.3	
Right front zone	Semi-rapid	Semi-rapid	Simmer
Right front MJ/h	6.3	6.3	3.6
Right rear zone	Semi-rapid	Semi-rapid	Semi-rapid
Right rear MJ/h	6.3	6.3	6.3
<b>Included accessories</b>			
Wok support trivet	Yes	Yes	
Mini trivet	Yes	Yes	Yes

## RANGEHOOD SPECIFICATIONS

PRODUCT CODE	DCE5280HM	DVK6980HB	DBE6980HM	DGE5160HM
<b>Product name</b>	120cm Ceiling hood	90cm Inclined wall canopy	90cm Wall canopy	99cm Integrated
<b>Features</b>				
Control type	Electronic push button	Touch on glass	Touch on glass	Electronic push button
Remote Control	Yes			Yes
Hob <sup>2</sup> Hood capable	Yes	Yes	Yes	Yes
SilenceTech		Yes	Yes	
Breeze mode		Yes	Yes	
Lights	4	2	2	4
Dimmer-controlled lights	Yes	Yes	Yes	Yes
Micromesh filters	4	2	3	2
Number of fan motors	1	1	1	1
Number of fans speeds	3 (+1 intense)	3 (+2 intense)	3 (+2 intense)	3 (+1 intense)
Charcoal filter included	Yes	Yes	Yes	Yes
Auto off	Yes	Yes	Yes	Yes
Ducted maximum air flow - intense (M3/Hr)	710	720	710	660
Noise (High) ducted dB(A)	70	54	54	67
<b>Product dimensions</b>				
Height (mm)	311	465	60	330
Width (mm)	1200	898	898	990
Depth (mm)	500	396	470	300
<b>Minimum installation height</b>				
Gas cooktop (mm)	650	650	650	650
Electric/induction cooktop (mm)	600	600	600	600
<b>Other</b>				
Top or rear duct hole	Rear	Top	Top	Top
Recirculation option	Yes	Yes	Yes	Yes

## RANGEHOOD SPECIFICATIONS

PRODUCT CODE	DGE5860HM	DGE5660HM	DPB5950M/A	DPB5650M/A
<b>Product name</b>	77cm Integrated	54cm Integrated	90cm Telescopic	60cm Telescopic
<b>Features</b>				
Control type	Electronic push button	Electronic push button	Push button & slide	Push button & slide
Remote Control	Yes	Yes		
Hob <sup>2</sup> Hood capable	Yes	Yes		
SilenceTech				
Breeze mode				
Lights	2	2	2	2
Dimmer-controlled lights				
Micromesh filters	2	2	4	2
Number of fan motors	1	1	1	1
Number of fans speeds	3 (+1 intense)	3 (+1 intense)	3	3
Charcoal filter included	Yes	Yes	Yes	Yes
Auto off	Yes	Yes		
Ducted maximum air flow - intense (M3/Hr)	660	660	603	603
Noise (High) ducted dB(A)	67	67	66	66
<b>Product dimensions</b>				
Height (mm)	330	330	40	40
Width (mm)	770	540	898	598
Depth (mm)	300	300	280	280
<b>Minimum installation height</b>				
Gas cooktop (mm)	650	650	650	650
Electric/induction cooktop (mm)	600	600	600	600
<b>Other</b>				
Top or rear duct hole	Top	Top	Top	Top
Recirculation option	Yes	Yes	Yes	Yes

## REFRIGERATION SPECIFICATIONS

PRODUCT CODE	SCE81826TC	SKE81821DC	ABE81826NC
<b>Product name</b>	Integrated bottom mount refrigerator	Integrated refrigerator	Integrated freezer
<b>Features</b>			
TwinTech technology	Yes		
SoftClose hinges	Yes	Yes	Yes
DynamicAir technology	Yes	Yes	
LCD touch controls	Yes	Yes	Yes
Coolmatic	Yes	Yes	
Frostmatic	Yes		Yes
<b>Product dimensions*</b>			
Height (mm)	1783	1783	1783
Width (mm)	556	556	556
Depth (mm)	549	549	549
<b>Cut-out dimensions (internal)*</b>			
Height (mm)	1771-1781	1771-1781	1771-1781
Width (mm)	560-568	560-568	560-568
Depth (mm)	550 (min)	550 (min)	550 (min)
Cabinet depth (mm)	549	549	549
Total gross capacity (L)	265	314	216
Food compartment capacity (nett in litres)	189	314	
<b>Energy</b>			
Energy star rating	3	3	3
Domestic warranty details (years)	5	5	5
Exterior door finish	Cabinetry required (not included)	Cabinetry required (not included)	Cabinetry required (not included)
Exterior cabinet finish	White	White	White
Door style	Square	Square	Square
Fridge door opening	Reversible	Reversible	Reversible
Cooling system	NoFrost	NoFrost	Frost free
Refrigerant	R600a	R600a	R600a
<b>Refrigeration system</b>			
Controls	Electronic (with display)	Electronic (with display)	Electronic (with display)
Controls location	Internal	Internal	Internal
Controls type	Touch	Touch	Touch
Control functions	Holiday mode, coolmatic, frostmatic, DynamicAir, child lock & drinks chill	Holiday mode, coolmatic, DynamicAir, child lock & drinks chill	Holiday mode, frostmatic, child lock & drinks chill
Door alarm	Fridge & freezer	Fridge	Freezer
<b>Food compartment</b>			
Shelving			
Shelf material	Glass	Glass	Glass
Standard shelves	3	4	6
Slide away shelf	1	1	
Shelf	Glass	Glass	
Crispers	2	1	
Lighting			
LED lighting	Yes	Yes	
<b>Food compartment door</b>			
Full width bins	2	3	
Deep bottle bin	1	1	
Half width bins		1	
Full width dairy with lid	1	1	
<b>Freezer compartment</b>			
Ice cube tray			1
Number of shelves			6
Full width plastic basket			5

\* These products require specialist installation. Please refer to the detailed installation instructions.

## FIRST KLASSE CARE

Perfection is an AEG hallmark, backed by our complete commitment to customer care.

We employ a dedicated service team ready to ensure your experience with AEG is nothing short of exceptional – every single day.

### Same-day service\*

Our technicians are trained to the highest AEG factory standards, ready to be deployed at a moment's notice. Call from any major capital city before midday (12 noon EST) and we'll be with you that very same day, if requested. Call after midday and we guarantee next day service with the option to accept a preferred two-hour window between 8am - 5pm, Monday to Friday within the metropolitan area.\*

### Dedicated contact centre

Like our products, our dedicated First Klasse Care Team offers unrivalled dependability. Contact us for delivery enquiries, installation details, product features, service updates and even product dimensions.

### Prompt delivery & connection

At AEG, dedication to service begins long before your new appliance arrives. You can expect a call ten days prior to delivery to arrange the most suitable date, followed by a confirmation call on the eve of delivery to arrange the most suitable time of day.

Our professional AEG service personnel deliver to all major capital cities, and will unpack your new appliance and connect it to existing utilities†. We'll also remove your old appliance and all packaging to be environmentally recycled.

Electrolux will at all times comply with its obligations pursuant to law including the Trade Practices (Australian Consumer Law) Act and Regulations.

## AEG 5 YEAR GARANTIE

Perfection is nothing without endurance.

Every AEG product in our collection is equipped with our assurance that it will perform beyond expectations. It's called AEG – Garantie. You will receive a 5 year warranty with every product. Of course, it's nothing less than you'd expect of high performing German standards.

We Garantie it.

### Warranty

Electrolux Home Products warrants that for domestic applications, the AEG appliances featured in this brochure are free from defects in materials and workmanship for 5 years and 12 months for all AEG accessories. All warranties are subject to the conditions set out in the warranty card accompanying the product when purchased.

### Product information

The descriptors and illustrations in this publication apply to the specific products and models described as at the date of issue. Under our policy of continuous product development, product specifications may change without notice. Prospective purchasers should therefore check with their retailer to ensure this publication correctly describes the products that are being offered for sale. All information supplied is to be used for general reference purposes only and is on the understanding that Electrolux Home

Products Pty Ltd will not be liable for any loss, liability or damage of whatever kind arising as a result of reliance on such information. Colours of products illustrated are as close as printing limitations allow. Electrolux will at all times comply with its obligations pursuant to law including Competition and Consumer Act and Regulations.

† Brisbane, Sydney, Melbourne, Adelaide, Perth.

\* Delivery to regional and country areas can be arranged with your local retail store.

^ Only basic installations of laundry and dishwashers supported, limited to a 10 amp plug and lead. Please consult your relevant tradesperson.

**5** YEAR WARRANTY  
**AEG GARANTIE**





Electrolux Home Products

Australia

telephone: 1300 363 664

fax: 1800 350 067

customercare@aegaustralia.com.au

aeg.com/au



AEG. We are part  
of the Electrolux Family.  
To add a touch of professional  
inspiration to your home,  
visit [electrolux.com.au](http://electrolux.com.au)



Printed on Monza Satin Recycled Art stock containing  
99% recycled material & 1% Virgin wood fibre.